

2016 North Slope

Spill Response Equipment



Membership of ACS





Introduction

This Manual provides a guide to the location, ownership, type, amount and specifications to North Slope response equipment that Alaska Clean Seas (ACS) utilizes. In 1995, all spill equipment on the North Slope was consolidated, which brought it all into one tracking and maintenance system.

Spill response equipment warehouses, storage yards, and satellite areas are strategically located in each operating field and at two separate locations in Deadhorse. With assistance from ACS Base, field-assigned ACS technicians support the operating area facilities and sites; while the Deadhorse locations are managed by ACS Base personnel.

ACS technicians perform required preventative and routine maintenance activities on both ACS and Member Company dedicated spill response equipment. Equipment repairs beyond the capabilities of ACS technicians are accomplished by mechanics assigned to ACS Base in Deadhorse. This shop performs complex maintenance tasks and maintains vessels and specialized response equipment. Off-shore marine vessels and equipment are maintained and repaired by Marine mechanics at A4W1. Major equipment modification work and specialized fabrication are also accomplished at these facilities.

Currently, the value of dedicated spill response equipment warehoused under ACS management exceeds \$75 million. ACS owns roughly half of this equipment while the Member Companies own the other half. With the exception of repair or maintenance costs, all ACS owned equipment is available to Member Companies at no charge, during a spill response. Member owned equipment is available to all other members under terms and conditions outlined in the North Slope Mutual Aid Agreement.

The ACS owned equipment is also available for rental for non-spill response related activities. Rental rates have been developed for all ACS equipment. Additional ACS equipment rental information can be obtained from our Eastern Area Supervisor at 907-659-3205.

In summary, ACS maintains a vast amount of equipment located throughout the operating oil fields on the North Slope of Alaska. This manual is intended to assist potential users in understanding ACS spill response equipment and how they might access it for both spill and non-spill related work. Should you have additional questions, please contact us at (907) 659-2405.

Should there be any questions regarding the equipment and/or rentals, please contact us at (907) 659-2405.



Table Of Contents

Safety

Meters	Page 1
Automated External Defibrillators (AEDs)	Page 2
Emergency Locator Beacons (EPIRB) and Global Position Indicating Radio Beacons (GPIRB)	Page 3
Life Rafts	Page 4
Dry Decons	Page 5
Wet Decons	Page 6

Section A

Vessels and Accessories

Agviq	Page 7
Big Dipper	Page 8
Bay Boats	Page 9
Fireweed and Arctic Rose	Page 10
Deployer and Retriever	Page 11
Island Boats	Page 12
Bullet and Snow White	Page 13
Large Landing Crafts	Page 14
Small Landing Crafts	Page 15
Near-shore Work Boats	Page 16
Airboats	Page 17
Outboards	Page 18

Section B

Recovery Equipment

LORI Brush Skimmers	Page 19
Vikoma Weir Skimmers	Page 20
Foxtail 4-9 Vertical Adhesion Band Skimmer	Page 21
Desmi Skimmers (Ocean and Harbor)	Page 22
Disc Skimmers	Page 23
Drum/Brush Skimmers	Page 24
Grooved Drum Skimmer w/Steam Coils and Steam Trailers	Page 25

Section C



Table Of Contents - Continued

Crucial Fuzzy Disc Skimmer	Page 26
Crucial Fuzzy Drum Skimmer	Page 27
Lamor Brush Belt Skimmer and Rock Cleaners	Page 28
Skimmer Rope Mops	Page 29
SeaVac Heli-Skimmer	Page 30
Manta Ray Skimmers	Page 31
Vac Units	Page 32
Mini Vac Units	Page 33
Air Power Units	Page 34
Snow Blowers	Page 35
Ice Augers	Page 36
Jackhammers	Page 37
Chainsaws and Ice Trenching Tools	Page 38
Rube Witches	Page 39
Containment	Section D
Delta/River Boom	Page 40
Boom Rudders	Page 41
Boom Handler	Page 42
Shore Seal Boom	Page 43
Kepner Boom Reel Packs	Page 44
NOFI Ocean Boom	Page 45
NOFI Harbor Buster	Page 46
Ro-Boom	Page 47
Goodyear Ocean Boom	Page 48
Abasco Harbor Boom	Page 49
Lamor Boom Reel Packs	Page 50



Table Of Contents - Continued

Boom Inflating Blowers	Page 51
Floating Pumps - 1 ½ "	Page 52
Pipe/Culvert Plugs	Page 53
Water Spray Trailer	Page 54
In-Situ Burn Equipment	Section E
Helitorch Gelled Fuel Mixers	Page 55
Handheld Igniters	Page 56
Fire Boom	Page 57
Helitorches	Page 58
Transfer and Storage	Section F
Barges 125 BBL	Page 59
Barges 249 BBL	Page 60
Barge 650 BBL	Page 61
Viscous Oil Annular Injection Kits	Page 62
Fastank/Fold-A-Tanks	Page 63
Self Rising Tanks	Page 64
Floating Tank	Page 6
Upright Tank	Page 66
Bladders	Page 67
Heavy Oil Pumps	Page 68
Air Diaphragm Pumps 0.5" to 3"	Page 69
Diesel/Hydraulic Diaphragm Pumps 2" and 3"	Page 70
Gas Diaphragm Pumps 3"	Page 71
Diesel/Hydraulic Peristaltic Pumps 2" , 2 ½" and 3"	Page 72
Sykes Univac Diesel Pumps 3"	Page 73



Table Of Contents - Continued

Centrifugal Pumps 2", 3" and 4"	Page 74
Emergency Dewatering Pumps 2"	Page 75
Logistics Support Equipment	Section G
Centaur 950DT	Page 76
4-Wheelers	Page 77
Kubotas with Tracks	Page 78
Tucker Sno-Cat	Page 79
Bobcat Tool Cat 5600	Page 80
Snow Machines and Sleds	Page 81
Muck Truck Motorized Wheelbarrow	Page 82
Passenger/Work Vehicles	Page 83
14 Passenger Bus	Page 84
Medium Duty Flatbed	Page 85
Truck Tractors	Page 86
Boom Trucks	Page 87
Mechanics' Trailers	Page 88
Dump Truck	Page 89
Dempster System Equipped Trucks	Page 90
Skid Steer Loaders	Page 91
Warehouse Fork Lifts	Page 92
Front End Loaders w/attachments	Page 93
Mobile Command Centers	Page 94
Staging Area Manager Offices	Page 95
Winter Response Vans	Page 96
Tanker Rollover Van	Page 97
Steam Van	Page 98
Warm Up/Break Shacks	Page 99



Table Of Contents - Continued

Portable Shelters	Page 100
Portable Shops	Page 101
Portable Restroom Units	Page 102
Indirect Fired Heaters	Page 103
Under Water Drop Lights	Page 104
Light Plants and Stands	Page 105
Diesel Generators (various)	Page 106
Gas Generators (various)	Page 107
Air Compressors	Page 108
20' and 40' Connex	Page 109
Portable Fuel Tanks	Page 110
Communications	Section H
Portable Communications Towers	Page 111
Portable Communications Shelters	Page 112
Handheld Radios	Page 113
Iridium Phones	Page 114
Mobile Radios	Page 115
GPS	Page 116
Gap Fillers	Page 117
Radio Winter Drilling Kits	Page 11189
Wildlife	Section I
Pinniped Enclosure	Page 119
Bear Cages	Page 120
Net Launchers	Page 121
Wildlife Kits(capture and hazing)	Page 122
12 Gauge Shot Guns	Page 123
Bird Stabilization Center	Page 124
Bird Scare Devices	Page 125



Table Of Contents - Continued

Misc.

Metocean Spill Tracking Systems

Ground Penetrating Radar System

Hydraulic Power Units (various)

Mega Secur Dams

Section J

Page 126

Page 127

Page 128

Page 129



Safety

Meters



Quantity: 19 Total

Manufacturer: Rae, Draeger, Industrial Scientific, Ex Tech

Owner(s):	8 each Six Gas, ACS	2 Benzene, ACS	3 PID, ACS
	1 Tube Pump, ACS	1 Decibel, ACS	1 CMS, ACS
	1 each Six Gas, CPAI	2 each Six Gas, Exxon	

Function: Air and sound sampling and monitoring

Auxiliary Equip: Charging Station, CalGas, Pump, Wand, Filters, Chips, Tubes, Hose

Automated External Defibrillators (AEDs)



Quantity: 4 Total

Manufacturer: Phillips and Cardiac Science

Owner(s): ACS

Specifications: Cardiac Science-9390A, Phillips 861304, and M5066A

Function: Emergency first aid.

Emergency Locator Beacons (EPIRB and GPIRB)



- Quantity:** 14 Total
- Manufacturer:** ACR Electronics
- Owner(s):** ACS
- Specifications:** 406 MHz Satellite, Cat 1, Class 2
- Function:** Emergency location of vessels and personnel.

Life Rafts



Quantity: 33 Total

Manufacturer: DBC, Elliot, Viking and Lalizas

Owner(s): 32 each, ACS 1 each, ENI

Specifications: 6 each, 4 person 11 each, 6 person
 15 each, 10 person 1 each, 12 person (ENI)

Function: Life saving equipment for vessels in distress.

Dry Decons



EOA



WOA



KRU



ACS



ACS

Quantity: 7 Total

Manufacturer: Wells Cargo, Charmac, Fruehauf and Alchem

Owner(s): 2 each, ACS 3 each, BP 2 each, CPAI

Specifications: 20' to 50' trailer or connex units

Function: Provide dry decon facilities during response operations.

Auxiliary Equip: Generator, Tail Roll Truck or Trailer

Wet Decons



BP



CPAI



Exxon

Quantity: 3 Total

Manufacturer: Ameri-Can, Intercontinental

Owner(s): 1 each, BP 1 each, CPAI 1 each, Exxon

Specifications: These self-contained decontamination units are designed to be hauled with either a Dempster system equipped truck or a pickup truck to a spill response site.

Function: Designed to accommodate either wet or dry decon processes.

Auxiliary Equip: Generator power for Kuparuk unit: EOA equipped with dedicated generator. Transport truck.



Vessels and Accessories

Section B

Agviq



- Quantity:** 1 Total
- Manufacturer:** Grayling Marine
- Owner(s):** ACS
- Specifications:** Draft: 2' 6"
- Fuel Capacity: 900 gallons
- Twin Lugger, 250 HP each, jets
- Range: 280 NM @ 2300 RPM w/28 HRS operating time
- Cruising Speed: 8 -12 kts
- 55 ft., 45,000 lbs.
- Function:** Transporting equipment and personnel, boom deployment and skimming activities.

Big Dipper



- Quantity:** 1 Total
- Manufacturer:** Grayling Marine
- Owner(s):** ACS
- Specifications:** Draft: 2'6"
Fuel Capacity: 632 gallons
Twin CAT, 450 HP each, jets
Range: 75 NM @ 2400 RPM w/17.5 HRS operating time
Cruising Speed: 8 -12 kts
45 ft., 37,000 lbs.
- Function:** Transporting equipment and personnel, boom deployment and skimming activities.

Bay Boats



Quantity: 4 Total

Manufacturer: Rozema Boat Works

Owner(s): ACS

Specifications: 1 each, Camden Bay, Gwydyr Bay, Harrison Bay and Mikkelsen Bay

Draft: 3'9"

Fuel Capacity: 700 gallons

Twin Lugger, 450 HP each, prop

Range: 340 NM @ 2,000 RPM w/20 HRS operating time

Cruising Speed: 17 kts

42 ft., 37,000 lbs.

Function: Moving and deploying boom, skimmers, containment barges, and transporting personnel and equipment. The twin engine power supply allows for larger towing capacity and provides increased speed.

Fireweed and Arctic Rose



Fireweed



Arctic Rose

Quantity: 2 Total

Manufacturer: Munson

Owner(s): ACS

Specifications: 1 each, Fireweed and Arctic Rose

Draft: 2'8"

Fuel Capacity: 650 gallons

Twin Cummins, 250 HP each, prop

Range: 456 NM @ 2300 RPM w/38 HRS operating time

Cruising Speed: 12 kts

38 ft., 30,000 lbs.

Function: Transporting equipment and personnel, towing boom and mini-barges for spill response.

Deployer and Retriever



Quantity: 2 Total

Manufacturer: Munson

Owner(s): ACS

Specifications: Draft: 2'

Fuel Capacity: 200 gallons

Twin Evinrude Outboards, 150 HP each, prop

Range: 175 NM, 4,000 RPM w/ 7.5 HRS operating time

Cruising Speed: 23 kts

29 ft., 9,000 lbs.

Function: Boom towing, mini-barges, bladders and transport personnel and equipment.

Island Boats



Quantity: 4 Total

Manufacturer: Rozema Boat Works

Owner(s): Hilcorp

Specifications: 1 each, Karluk Island, Cottle Island, Barter Island and Narwhal Island

Draft: 3'9"

Fuel Capacity: 172 gallons

Single CAT, 300 HP, prop

Range: 144 NM @ 2,400 RPM w/12 HRS operating time

Cruising Speed: 8 kts

25 ft., 14,800 lbs.

Function: Boom towing and mini-barge operations.

Bullet and Snow White



Bullet



Snow White

- Quantity:** 2 Total
- Manufacturer:** Munson
- Owner(s):** ACS
- Specifications:** 1 each, Bullet and Snow White
 - Draft: 1'6"
 - Fuel Capacity: 79 gallons, Bullet
 - Fuel Capacity: 147 gallons, Snow White
 - Twin Evinrude Outboards, 90 HP each, prop, Bullet
 - Single Chevrolet 350ci inboard, w/Volvo Penta outdrive, Snow White
 - Cruising Speed: 20 kts
 - 21 ft., 6,000 lbs.
- Function:** Near-shore operations to include boom towing.

Large Landing Crafts



ACS



CPAI



Exxon

Quantity: 4 Total

Manufacturer: Munson, Riddle

Owner(s): 1 each, ACS 1 each, CPAI 2 each, Exxon

Specifications: Draft: 20 in. - 2 ft.

Fuel Capacity: 300 - 400 gallons

Twin Evinrude 300 Outboards, Twin Yanmar 350 Diesel

Cruising Speed: 27 - 30 kts

34 ft. - 37 ft., 14,100 lbs. – 18,500 lbs.

Function: Transporting equipment, personnel, and boom deployment for near-shore response operations.

Small Landing Crafts



Hilcorp



Caelus



ACS



ENI



CPAI

Quantity: 6 Total

Manufacturer: Grayling Marine, Munson and Riddle

Owner(s): 2 each, ACS 1 each, ENI
 1 each, Hilcorp 1 each, Caelus
 1 each, CPAI

Specifications: Draft: 1' - 3'
 Fuel Capacity: 60 - 150 gallons
 Cruising Speed: 20 - 30 kts
 22 to 32 ft., 2,200 lbs. – 12,000 lbs.

Function: Transporting equipment, personnel, and boom deployment for near-shore response operations.

Near-shore Work Boats



Quantity: 37 Total

Manufacturer: Bombard, SJX, Sea Nymph, Gregor, Valco, Achilles, ACS, Lowe, Marian, BN Bolton, Munson, Woolridge, Phantom, Sea Ark, Rozema, Riddle and Smokecraft

Owner(s): 11 each, ACS 3 each, BP 3 each, Hilcorp
 1 each, Caelus 18 each, CPAI 1 each, Exxon

Specifications: 12' to 28' rigid hulled up to 200 HP

Function: Containment, recovery and logistical support for near-shore response operations.

Outboards



- Quantity:** 51 Total
- Manufacturer:** Evinrude, Johnson, Honda, Yamaha ,Suzuki and Prodrive
- Owner(s):** 21 each, ACS 8 each, BP 2 each, ENI
 13 each, CPAI 3 each, Caelus 1 each, Savant
 3 each, Hilcorp
- Specifications:** 10 Jet Units: 25 to 115 HP
 41 Prop Units: 4 to 300 HP
- Function:** Power non-inboard engine vessels.



Recovery Equipment

LORI Brush Skimmers



Quantity: 12 Total

Manufacturer: Lamor

Owner(s): 10 each, ACS 2 each, Hilcorp

Specifications: 8 each, LSC-3
 4 each, LFS-3 (without brushes)

Nameplate Capacity: 271 BPH

Derated Capacity: 217 BPH

Function: Advancing brush skimmer for the recovery of heavy oils in open ocean conditions.

LORI Side Collector (LSC) - Vessel based oleophilic chain brush skimmer designed for advancing skimming operations in the near shore and open ocean environment. Skimmer is capable of recovery speeds up to 3 knots and adaptable to varying oil viscosities via interchangeable brush cassettes. Integral positive displacement Desmi 250 transfer pump capable of pumping highly viscous fluids.

LORI Floating Skimmer (LFS) - Independent oleophilic chain brush skimmer designed for advancing skimming operations in the near shore and open ocean environment. Skimmer can effectively be towed, pushed or affixed to the side of a vessel. Skimmer is capable of recovery speeds up to 3 knots and adaptable to varying oil viscosities via interchangeable brush cassettes. Integral positive displacement Desmi 250 transfer pump capable of pumping highly viscous fluids.

Auxiliary Equip: Hydraulic power pack and vessel for advancing skimmer

Vikoma Weir Skimmers



Fasflow

- Quantity:** 5 Total
- Manufacturer:** Vikoma
- Owner(s):** ACS
- | | | |
|------------------------|----------------------|---|
| Specifications: | 4 each, Mini Fasflow | Nameplate Capacity: 143 BPH
Derated Capacity: 29 BPH |
| | 1 each, Fasflow | Nameplate Capacity: 486 BPH
Derated Capacity: 97 BPH |
- Function:** Spill recovery in fast moving water.
- Auxiliary Equip:** 3" Diaphragm Pump with Mini or 3" Sykes Univac with Fasflow

Foxtail Rope Mop Skimmer



Foxtail 1-6

Foxtail 4-9

Quantity: 2 Total

Manufacturer: Hendriksen

Owner(s): ACS

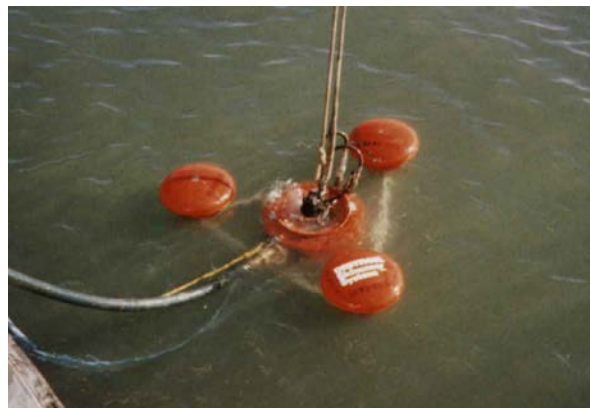
Specifications: Foxtail 4-9 Nameplate Capacity: 249 BPH
 Derated Capacity: 119 BPH

Specifications: Foxtail 1-6 Nameplate Capacity: 19 BPH
 Derated Capacity: 15 BPH

Function: Near-shore and shore recovery responses. Very good skimmer for broken ice conditions.

Auxiliary Equip: Hydraulic power pack, recovery tank

Desmi Skimmers (Ocean and Harbor)



Quantity:	3 Total	
Manufacturer:	Desmi	
Owner(s):	2 each, ACS	1 each, CPAI
Specifications:	1 each, Ocean:	Nameplate Capacity: 628 BPH Derated Capacity: 91 BPH
	2 each, Harbor*:	Nameplate Capacity: 440 BPH Derated Capacity: 88 BPH
	*When changed over to brush : 3 each	Nameplate Capacity changes to: 171 BPH Derated Capacity: 137 BPH 1 with brush kit
Function:	The Desmi Skimmer is of weir type. Rated for recovery from offshore and near-shore environments.	
Auxiliary Equip:	Hydraulic hoses, discharge hoses, power pack or Quattro brush adapter	

Disc Skimmers



Komara



Morris



Komora Star

Quantity: 26 Total

Manufacturer: Morris International Trading Ltd. and Vikoma (12k and 30k)

Owner(s): 5 each, ACS 16 each, BP

1 each, Hilcorp 4 each, CPAI

Specifications: 3 each, MI-30: Nameplate Capacity: 143 BPH
Derated Capacity: 10 BPH

4 each, MI-11/24: Nameplate Capacity: 29 BPH
Derated Capacity: 3 BPH

10 each, Komara 30K: Nameplate Capacity: 189 BPH
Derated Capacity: 10 BPH

8 each, Komara 12K: Nameplate Capacity: 100 BPH
Derated Capacity: 10 BPH

1 each, Komara	Nameplate Capacity: 20 BPH
Star Heavy Oil	Derated Capacity: 16 BPH
Skimmer	

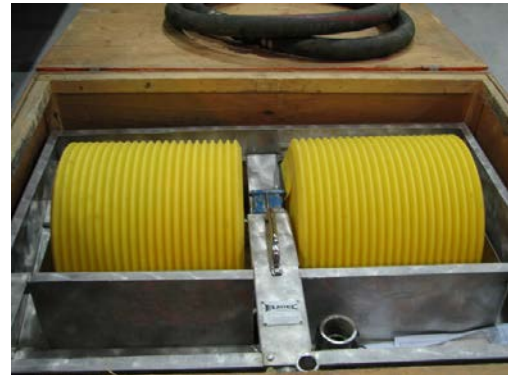
Function: Near-shore and on-shore use. This skimmer contains three sets of oleophilic (oil attracting) discs. The discs rotate down through the oil layer where free floating oil attaches to the surface of the discs. Inside the skimmer, scrapers remove the oil, which is then pumped to storage containers.

Auxiliary Equip: Power packs and hoses

Drum/Brush Skimmers



Aqua Guard



Elastec Groovy Drum



Lamor



Action Petroleum

Quantity: 37 Total

Manufacturer: Elastec American Marine, Action Petroleum, Aqua Guard, Komara and Lamor

Owner(s): 12 each, ACS 2 each, BP 20 each, CPAI
 2 each, Caelus 2 each, Exxon 1 each, Hilcorp

Specifications: Drums range from 6.5" to 36"

Nameplate Capacity: 33 to 314 BPH

Derated Capacity: 26 to 110 BPH

Function: Recovery of refined fuels and crude oil from near-shore and inland waters.

Auxiliary Equip: Hydraulic or air power sources

Grooved Drum Skimmer w/Steam Coils and Steam Trailers



Quantity: 10 skimmers, 2 steam trailers

Manufacturer: Elastec American Marine

Owner(s):	3 each, skimmer, ACS	1 each, skimmer, CPAI
	2 each, skimmer, Exxon	2 each, skimmer, Hilcorp
	2 each, skimmer, BP	
	1 each, trailer, ACS	1 each, trailer Exxon

Specifications: Model – Magnum 100, 4-Drum skimmer

Function: Recovery of refined fuels and crude oil near-shore and inland waters, particularly during freeze up conditions.

Auxiliary Equip: Hydraulic power source and independent pump unit.

Crucial Fuzzy Disc Skimmer



Quantity: 10 Total

Manufacturer: Crucial

Owner(s): 9 each, ACS 1 each, Hilcorp

Specifications: 4 each, Model 13/24
 6 each, Model 13/30

Function: Oil recovery from on water operations.

Auxiliary Equip: Hydraulic power unit and pump

Crucial Fuzzy Drum Skimmer



Quantity: 6 Total

Manufacturer: Crucial

Owner(s): 4 each, ACS 1 each, Hilcorp 1 each, ENI

Specifications: Model #1CD18H-36

Function: Oil recovery from on water operations.

Auxiliary Equip: Hydraulic power unit, 3" pump

Lamor Brush Belt Skimmers and Rock Cleaners



Rock Cleaner Attachment

- Quantity:** 13 Total
- Manufacturer:** Lamor
- Owner(s):** 1 each, MM-30, CPAI
 8 each, MM-20, CPAI
 2 each, Rock Cleaners, CPAI
 2 each, LAM 12, ACS
- Specifications:** Nameplate Capacity: 75 to 252 BPH
 Derated Capacity: 60 to 201 BPH
- Function:** Recover diesel or crude product from the water or rock surfaces.
- Auxiliary Equip:** Hydraulic or air power sources

Skimmer Rope Mops



Quantity: 34 Total

Manufacturer: Containment Systems Corporation, Centrifugal Systems
 Oil Mop and Crucial

Owner(s): 16 each, ACS 6 each, BP 9 each, CPAI
 1 each, Savant 2 each, Hilcorp

Specifications: Electric and diesel powered 4" Nameplate Capacity: 14 BPH
 Derated Capacity: 11 BPH

2 each, 6" Rope Mops 6" Nameplate Capacity: 29 BPH
 32 each, 4" Rope Mops Derated Capacity: 23 BPH

Function: Recover hydrocarbons from shallow water, broken ice and tundra
 in polygonal trenches.

Auxiliary Equip: Two 4" x100' mops, two return pulleys and one containment drum
 with pallet

SeaVac Heli-Skimmer



Quantity: 1 Total

Manufacturer: Kepner Products

Owner(s): ACS

Specifications: Nameplate Capacity: 944 BPH
Derated Capacity: 189 BPH

Function: Advancing weir skimmer for the recovery of heavy or emulsified oils in protected waters.

Auxiliary Equip: Outboard motor, and 2"-3" trash pumps

Manta Ray Skimmers



Quantity: 47 Total

Manufacturer: Slickbar

Owner(s): 3 each, ACS 25 each, BP
 16 each, CPAI 3 each, Hilcorp

Specifications: Nameplate Capacity: 54 BPH
 Derated Capacity: 11 BPH

10 Flexible
 37 Rigid

Function: Recovery of thin oil layers and sheen in protected waters.

Auxiliary Equip: 3" Diaphragm pump or Peristaltic pump

Vac Units



Quantity: 11 Total

Manufacturer: Vikoma, Vac-U-Max

Owner(s): BP and Hilcorp

Specifications: 8 each, BP 3 each, Hilcorp

Function: Air and diesel driven vacuum units for spill recovery inside fixed structures or flat hard surfaces.

Auxiliary Equip: Air compressor or auxiliary power unit

Mini Vac Units



Quantity: 5 Total

Manufacturer: Elastec American Marine

Owner(s): 2 each, ACS 1 each, Exxon
 1 each, Hilcorp 1 each, CPAI
 1 each, tank, CPAI 1 each, tank, Exxon

Specifications: 20 HP power unit

Function: Recovery of product in remote, or "off site" locations.

Auxiliary Equip: 55 gallon open top drums, 110 gallon all-terrain tracked tank, ATV or snow machine for transport

Air Power Units



- Quantity:** 3 Total
- Manufacturer:** Elastec American Marine
- Owner(s):** 1 each, ACS 2 each, CPAI
- Specifications:** Diesel powered
- Function:** Power unit designed to operate air drum skimmers as an all in one unit. Power unit equipped with air compressor and peristaltic pump.

Gas and Propane Powered Ice Augers



Quantity: 41 Total

Manufacturer: General Equipment Co., Ardisam, Feldman and Strike Master

Owner(s):	8 each, ACS	12 each, CPAI	11 each, BP
	1 each, Caelus	2 each, ENI	1 each, Savant
	5 each, Hilcorp	1 each, Exxon	

Specifications: One and two person units

Function: Drill through ice to the water interface. This technique is used for product detection and recovery.

Auxiliary Equip: Bits and extensions

Jackhammers



Quantity: 15 Total

Manufacturer: Ingersoll Rand, Dewalt

Owner(s): 4 each, ENI 3 each, CPAI 5 each, BP
 2 each, Caelus 1 each, Savant

Specifications: One and two person units
 13 each, air powered
 2 each, electric

Function: Break up contaminated ice or ground for recovery.

Auxiliary Equip: Compressor or generator, hose, whip check, paddles/bits, tanner gas.

Chainsaws and Ice Trenching Tools



Quantity: 52 Total (chainsaws)

Manufacturer: Stihl and Homelite

Owner(s): 12 each, ACS 12 each, BP 13 each, CPAI 2 each, Exxon
 2 each, ENI 2 each, Caelus 9 each, Hilcorp

Specifications: 18" to 48" chainsaw bar

Function: Trench and remove ice for winter containment and recovery.

Note: Various chipping bars and ice tongs are stocked at each location

Rube Witches



Quantity: 9 Total

Manufacturer: ACS

Owner(s): 7 each, ACS 2 each, CPAI

Specifications: 36" chainsaw bar required

Function: Cut trenches in the ice or to cut out blocks of ice to be used in recovery techniques. Provides a safe platform for chainsaw use.

Auxiliary Equip: Stihl 056 or 066 chain saw with ice cutting chain



Containment

Delta/River Boom



Quantity: 210,575 ft.

Manufacturer: Elastec American Marine, Texas Boom, USA Mfg., Lamor
 CSI ,American Boom and Prestige

Owner(s): 64,500 ft., ACS 60,400 ft., BP 53,825 ft., CPAI
 7,950 ft., Savant 23,900 ft., Hilcorp

Specifications: 10", 14" and 16" x 50' and 75' Sections
 Delta Boom- Bottom Tension only 31,700 ft.
 River Boom- Top and Bottom Tension- 178,875 ft.

Function: Containment and control of oil in a river environment. Pre-staged
 at remote river sites in connexs for airboat deployment.

Auxiliary Equip: Connexs, anchors and airboats

Boom Rudders



Quantity: 90 Total

Manufacturer: Envirotech

Owner(s): ACS

Specifications: 8" diameter x 80" pipe with 12" x 60" deflector wing

Function: River booming without the use of midpoint anchor systems.

Auxiliary Equip: River boom

Boom Handler



Quantity: 1 Total

Manufacturer: Seacor Environmental Products

Owner(s): ACS

Specifications: 60" Roller

Function: Recovery of oil spill containment boom.

Shore Seal Boom



Quantity: 21,350 ft., Total

Manufacturer: Texas Boom and Versa Tech

Owner(s): 16,750 ft., ACS 1,600 ft., CPAI 1,000 ft., Exxon
 1,000 ft., ENI 1,000 ft., Caelus

Specifications: 20" x 50' sections

Function: Shoreline protection or used as barriers for on land flushing operations.

Auxiliary Equip: Air inflator and water pump

Kepner Boom Reel Packs



Quantity: 34,700 ft., Total

20" – 5,950 ft. 26" – 25,750 ft. 32" – 2,000 ft. 42" – 1,000 ft.

Manufacturer: Kepner

Owners: 24,450 ft., ACS 5,000 ft., (26"), ENI 1,750 ft., (26"), CPAI
 1,500 ft., (20"), Hilcorp 2,000 ft., (26") Exxon

Specifications: 20" to 42" x 250' to 1,000' per reel

Function: Rapid deployment of boom from shore or support vessel.

Auxiliary Equip: Hydraulic power pack and hoses

NOFI Ocean Boom



Quantity: 5428 ft. Total

Manufacturer: Allmaritim

Owner(s): ACS Hilcorp Caelus

Specifications: 5 each, Model 250 – 24", 984 ft. sections
 2 each, Model 350 – 34", 492 ft. sections

Function: Designed for easy transportation and rapid deployment.

NOFI Harbor Buster



Quantity: 2 Total

Manufacturer: NOFI

Owner(s): 2 each, Hilcorp

Size: 89 ft. long x 50 ft. wide at the mouth

Tow Speed: 3 kts

Max Volume: Total: 3,963 gallons In Separator: 1,321 gallons

Function: Designed for recovery of oil at high speeds in open water. Rear pocket separates oil from water and provides a calm recovery point for a skimmer. This can also be used in rivers of sufficient depth that do not exceed 3 kts.

Auxiliary Equip: Boom reel pack, power pack, blower, Boom Vane, tow vessel(s)

Ro-Boom



Quantity: 2,760 ft., Total

Manufacturer: Ro-Clean Desmi

Owner(s): 2,360 ft., Hilcorp 400 ft. ACS

Specifications: 59" or 79"

Function: Containment of product in waters deeper than 6 ft.

Auxiliary Equip: Hydraulic power pack and hoses

Goodyear Ocean Boom



Quantity: 11,385 ft., Total

Manufacturer: Engineered Fabrics Corporation

Owner(s): ACS

Specifications: 38" to 42" inflatable

Function: Containment of product in waters deeper than 6 ft.

Auxiliary Equip: Power pack, blower and hydraulic hoses

Abasco Harbor Boom



Quantity: 2,000 ft., Total

Manufacturer: Abasco

Owner(s): CPAI

Specifications: 30" Self-inflating, high tensile strength, unsinkable

Function: Containment of product in a near-shore and offshore environment.

Lamor Boom Reel Packs



Quantity: 2 Total

Manufacturer: Lamor Corporation

Owner(s): ACS

Specifications: 50" x 1500' per reel

Function: Rapid deployment and storage of Lamor boom.

Auxiliary Equip: Self contained with power pack and blower on reel. Power pack also set up to run DOP pumps.

Boom Inflating Blowers



Quantity: 51 Total

Manufacturer: Echo, Husqvarna and Stihl

Owner(s): 36 each, ACS 5 each, CPAI 4 each, Hilcorp
 2 each, Caelus 2 each, ENI 2 each, Exxon

Specifications: 388 CFM
 180 Air Speed at Pipe

Function: Boom inflation.

Floating Pumps 1 1/2"



Quantity: 51 Total

Manufacturer: Waterous and Hale

Owner(s): 36 each, ACS 6 each, BP
 2 each, Caelus 5 each, CPAI 2 each, ENI

Specifications: 140 GPM @ 30 psi: 200 BPH @ 30 psi

Function: Fill shoreseal boom with water.

Auxiliary Equip: Discharge hose

Pipe/Culvert Plugs



- Quantity:** 19 Total
- Manufacturer:** Cherne and Aero Tech Labs
- Owner(s):** 6 each, ACS 13 each, BP
- Specifications:** 1 – 6", 1 – 8", 2 – 12 to 18", 7 - 12 to 24", 2 - 15 to 30", 6 - 40"
- Function:** Block pipes or culverts to provide containment during a response.
- Auxiliary Equip:** Air compressor and hose

Water Spray Trailer



Quantity: 1 Total

Manufacturer: Magnum Fire Systems

Owner(s): ACS

Specifications: 12' trailer with insulated and heated housed fire pump water spray system. Powered by a 4 cylinder air cooled Deutz diesel engine and consists of a 300 gallon fresh water tank.

Function: Contain misted oil over a snow covered surface for mechanical recovery, particularly when high winds are expected to prevent the misted snow from blowing away.



In-Situ Burn Equipment

Helitorch Gelled Fuel Mixers



- Quantity:** 2 Total
- Manufacturer:** Simplex
- Owner(s):** ACS
- Specifications:** 300 gallons, 1 each trailer mounted and 1 each skid mounted
- Function:** Mix gelled fuel for aerial helitorches. Not DOT approved, must be filled onsite

Handheld Igniters



Quantity: Approximately 1400 each

Manufacturer: Energetex, Elastec

Owner(s): ACS

Specifications: Tin can style with hand held igniter

Plastic container filled with gelling agent with float

Function: Hand held igniter for in-situ burning.

Auxiliary Equip: Battery pack or an ignition source, handheld flare, fuel

Fire Boom



Quantity: 19,900 ft., Total, (500' of this is training boom)

Manufacturer: 3M, Applied Fabrics and Elastec American Marine

Owner(s): 16,100 ft., ACS 1,800 ft., BP
 1,000 ft., CPAI 1,000 ft., Hilcorp

Specifications: Sizes ranging from 20" to 42"
 3 M – 10,400 ft. - 20" to 42"
 Elastec - 6500 ft. - 27" to 33" Hydro Boom
 Applied - 3000 ft. - 30" Pyro Boom

Function: Containment of product for in-situ burning.

Auxiliary Equip: Tow bridles and boat for deployment and means of towing
 500' of Elastec training boom, not suitable for response.

Helitorches



- Quantity:** 6 Total
- Manufacturer:** Simplex
- Owner(s):** ACS
- Specifications:** 55 gallon
- Function:** Ignition of hydrocarbon products during in-situ burn operations.
- Auxiliary Equip:** Helicopter remote control box, spare 55 gallon drums



Transfer and Storage

Barges 125 BBL



Quantity: 2 Total

Manufacturer: North Wind Marine

Owner(s): ACS

Specifications: Draft: 1' empty, 3' full

125 bbls, 29' x 10' x 5'

5,200 lbs.

Function: Storage and transportation of product from skimming vessels to off loading point.

Auxiliary Equip: Off loading pumps

Barges 249 BBL



Quantity: 13 Total

Manufacturer: Kvichak Marine Industries

Owner(s): 10 each, ACS 2 each, Hilcorp 1 each, Exxon

Specifications: Draft: 1' empty, 4' full
 249 bbls, 40' x 11' x 5'6"
 10,875 lbs.

Function: Storage and transportation of product from skimming vessels to off loading point.

Auxiliary Equip: Off loading pumps

Barge 650 BBL



Quantity: 1 Total

Manufacturer: American Eagle

Owner(s): ACS

Specifications: Draft: 1' empty, 5' 6" full

650 bbls, 62' x 16' x 6'6"

35,000 lbs.

Function: Storage and transportation of product from skimming vessels to off loading point.

Auxiliary Equip: Off loading pumps and hydraulic power unit

Viscous Oil Annular Injection Kits



Quantity: 4 Total

Manufacturer: Hyde and Ro-Clean Desmi

Owner(s)/Location: ACS

Specifications: 2 each, 6" annular injection rings
 1 each, 4" annular injection rings
 1 each, 3" annular injection rings

Function: Enhance viscous oil pumping capabilities.

Auxiliary Equip: Discharge hose, hydraulic power pack and water injection pump, cargo pump

Fastank/Fold-A-Tanks



Quantity: 170 Total

Manufacturer: Fast Engineering, Vikoma, Fold-A-Tank and Aero Tech

Owner(s): 31 each, ACS 29 each, BP 6 each, Savant
 78 each, CPAI 6 each, Caelus 20 each, Hilcorp

Specifications: Fastank/Fold-A-Tanks/Open Top Tank 360 to 3,000 gallons

Function: Temporary storage of recovered product.

Self Rising Tanks



Quantity: 48 Total

Manufacturer: Canflex

Owner(s): 10 each, ACS 38 each, CPAI

Specifications: Self rising, 2,500 gallons

Function: Temporary storage of recovered product.

Floating Tank



Quantity: 1 Total

Manufacturer: Qualitech Environmental

Owner(s): CPAI

Specifications: 2100 gallons

Function: This tank can be placed under a leaking pipeline that is over a body of water. The tank is secured in place with anchors. This can also be used on tundra.

Upright Tank



Quantity: 1 Total

Manufacturer: ConocoPhillips

Owner(s): CPAI

Specifications: 16,800 gallons: 400 bbls, plus approximately 150 additional tanks available on the Slope ranging in size from 40 to 500 bbls.

Function: Storage of recovered product and flushing operations.

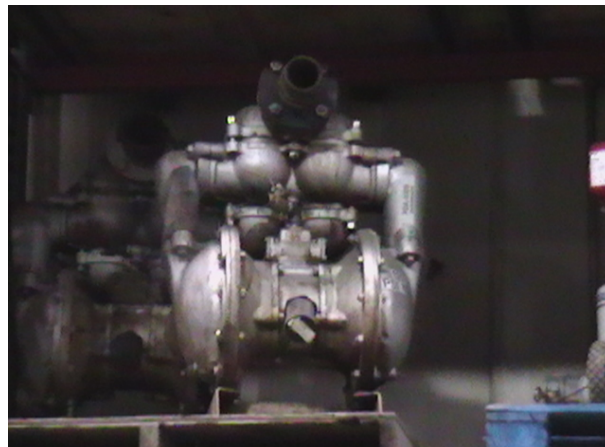
Bladders



- Quantity:** 22 Total
- Manufacturer:** Canflex and Areo Tech Labs
- | | | |
|------------------|-------------------------|--------------------------|
| Owner(s): | 8 each, 1,320 gal., ACS | 6 each, 2640 gal., ACS |
| | 3 each, 500 gal., CPAI | 5 each, 5,000 gal., CPAI |
- Specifications:** 500 to 5,000 gallons, Towable, Pillow, Tow/Lift
- Function:** Store and transport recovered product.
- Auxiliary Equip:** Boat, helicopter

Air Diaphragm Pumps

1/2", 1", 2" and 3"



Quantity: 20 Total

Manufacturer: Warren-Rupp, Wilden and Ingersoll-Rand

Owner(s): 6 each (1/2"), Exxon 6 each (1"), Exxon
 6 each (2"), Exxon 1 each (3"), CPAI
 1 each (2"), ENI

Specifications: 15 to 260 GPM, 371 BPH

Function: Transfer of product from a recovery point to a set storage area.

Auxiliary Equip: Air compressor, air hose and suction/discharge hose

Diesel/Hydraulic Diaphragm Pumps 2" and 3"



Quantity: 50 Total

Manufacturer: Yanmar and Gormann Rupp

Owner(s): 32 each, ACS 4 each, Hilcorp 7 each, CPAI
 2 each, ENI 1 each, Caelus 4 each, Exxon

Specifications: 3 each, 2" diesel pumps 1 each, 2" hydraulic pump
 40 each, 3" diesel pumps 6 each, 3" hydraulic pumps
 86-100 GPM, 123-142 BPH

Function: Transfer of product from a recovery point to a set storage area.

Auxiliary Equip: Suction and discharge hose

Gas Diaphragm Pumps 3"



- Quantity:** 12 Total
- Manufacturer:** Honda and Homelite-Textron
- Owner(s):** 2 each, BP 9 each, CPAI 1 each, Hilcorp
- Specifications:** 80 GPM, 85 BPH
- Function:** Transfer of product from a recovery point to a set storage area.
- Auxiliary Equip:** Suction and discharge hose

Diesel/Hydraulic Peristaltic Pumps 2", 2 ½", and 3"



Quantity: 18 Total

Manufacturer: Diesel America West and Salaroll

Owner(s): 7 each, ACS 3 each, BP 1 each, Caelus
 1 each, ENI 5 each, CPAI 1 each, Hilcorp

Specifications: 53-115 GPM, 75-164 BPH

Function: Transfer of product from a recovery point to a set storage area.

Auxiliary Equip: Suction and discharge hose

Sykes Univac Diesel Pump 3"



Quantity: 1 Total

Manufacturer: Sykes

Owner(s): ACS

Specifications: 340 GPM, 485 BPH

Function: Transfer of product from a recovery point to a set storage area.

Auxiliary Equip: Suction and discharge hose

Centrifugal Pumps 2", 3" and 4"



Quantity: 112 Total

Manufacturer: Yanmar, Gorman-Rupp, Elastec American Marine,, Diesel America West, Multi-Quip and Honda

Owner(s): 50 each, ACS 11 each, BP 27 each, CPAI
 1 each, Caelus 1 each, ENI 2 each, Savant
 12 each, Hilcorp 8 each, Exxon

Specifications: 2 each, 1", 32 GPM, 46 BPH Gas
 2 each, 1 ½", 74 GPM, 106 BPH Gas
 29 each, 2" up to 220 GPM, 314 BPH
 54 each, 3" up to 340 GPM, 485 BPH

17 each, 4" 370-750 GPM, 528-1071 BPH

8 each, 4" Fire Boom Pumps, Elastec American Marine

Function: Transfer of product from a recovery point to a set storage area.

Auxiliary Equip: Suction and discharge hose

Emergency Dewatering Pumps 2"



- Quantity:** 6 Total
- Manufacturer:** Ohler Machinery
- Owner(s):** ACS
- Specifications:** 230 GPM, 329 BPH
- Function:** Emergency dewatering pump for vessels in distress.
- Auxiliary Equip:** Suction and discharge hose



Logistics Support Equipment

Centaur 950DT



Quantity: 3 Total

Manufacturer: Ontario Drive and Gear Limited

Owner(s): 2 each, CPAI 1 each, Hilcorp

Specifications: Diesel powered amphibious tracked vehicle.

Function: All-season cross-country transportation of equipment and personnel.

Auxiliary Equip: Trailer, electric winch

4-Wheelers



Quantity: 11 Total

Manufacturer: Honda and Can-Am

Owner(s): 4 each, BP 3 each, CPAI 4 each, Hilcorp

Specifications: Gasoline ATV 300cc to 500cc

Function: Transportation of equipment.

Auxiliary Equip: Snow plow, trailers on wheels, trailers on skis and an electric winch

Kubotas with Tracks



Quantity: 12 Total

Manufacturer: Kubota

Owner(s): 5 each, ACS 3 each, BP 1 each, Exxon
 1 each, ENI 1 each, Caelus 1 each, Hilcorp

Specifications: 3 cylinder diesel (22 - 25HP)

Function: Transportation of equipment.

Auxiliary Equip: Snow plow, electric winch, trailers

Tucker Sno-Cat



Quantity: 1 Total

Manufacturer: Tucker Terra

Owner(s): 1 each, Exxon

Specifications: Model: 1643E-26-G

14 person

100 gallon fuel tank, 14,000 lbs.

Function: Transportation of personnel and equipment.

Auxiliary Equip: Snow plow, electric winch, trailers

Bobcat Tool Cat 5600



Quantity: 1 Total

Manufacturer: Bobcat

Owner(s): CPAI

Specifications: 4x4 All Terrain Vehicle with 40 plus attachments

Function: Daily use for spill response/cleanup, moving/lifting equipment, snow removal and transportation around the pad. It can carry 2,000 lbs. in cargo box and tow 4,000 lbs. plus lift over 1,500 lbs. to a height of 7 feet.

Auxiliary Equip Hydraulic concrete/ice breaker, two types of snow/ice/gravel scrapers, bucket, forks, pintle hitch, and a sweeper.

Snow Machines and Sleds



Quantity: 40 Total snow machines and 37 Total sleds

Manufacturer: SKI-DOO

Owner(s): 8 each, snow machines, ACS	6 each, snow machines, Hilcorp
4 each, snow machines, Exxon	2 each, snow machines, Caelus
12 each, snow machines, CPAI	2 each, snow machines, ENI
6 each, snow machines, BP	3 each, sled, Exxon
2 each, sled, Caelus	4 each, sled, BP
8 each, sled, CPAI	14 each, sled, ACS
3 each, sled, ENI	3 each, sled, Hilcorp

Specifications: Short and long track 250cc to 660cc

Function: Transportation of equipment and personnel.

Muck Truck Motorized Wheelbarrow



Quantity: 2 Total

Manufacturer: Muck Truck USA

Owner(s): ACS

Specifications: Model: Max-truck® with Honda GXV 4.3 HP 4-stroke engine.

Peerless 4 forward 1 reverse transmission

Speed: 0-3.5 mph

Capacity of 8 cu/ft. – 800 lbs. carrying capacity

Dimensions: Length 63" x Width 28" x Height 36"

Weight: 280 lbs.

Traction: 4 Wheel drive.

Function: Transport contaminated material from the spill site to the collection area.

Passenger/Work Vehicles



Quantity: 12 Total

Manufacturer: Ford Motor Company and Chevrolet

Owner(s): ACS

Function: Logistical support for spills and ACS daily activities.

14 Passenger Bus



Quantity: 1 Total

Manufacturer: Ford Motor Company

Owner(s): ACS

Function: Logistical support for spills and ACS daily activities.

Medium Duty Flatbed



Quantity: 1 Total

Manufacturer: Freightliner

Owner(s): ACS

Specifications: 2009 Freightliner, 330 HP Diesel, 4 x 4, 22' flatbed, extended cab

Function: Logistical support for day-to-day operations and spill response activities.

Truck Tractors



ACS



BP

Quantity: 2 Total

Manufacturer: Peterbuilt Autocar

Owner(s): 1 each, ACS 1 each, BP

Specifications: Triple-axle tractor

Function: Logistical support for day-to-day operations and spill response activities.

Auxiliary Equip: 40' flat bed cargo trailer, 50' step deck equipment trailer

Boom Trucks



ACS



BP

Quantity: 2 Total

Manufacturer: GMC and International

Owner(s): 1 each, ACS 1 each, BP

Function: Logistical support for day-to-day operations and spill response activities.

Mechanics' Trailers



- Quantity:** 2 Total
- Manufacturer:** Haulmark and Wells Cargo
- Owner(s):** 1 each, ACS 1 each, CPAI
- Function:** Mobile maintenance shop for field support.
- Auxiliary Equip:** 6kw generator, electric air compressor and various hand tools

Dump Truck



Quantity: 1 Total

Manufacturer: Autocar

Owner(s): BP

Function: Transport contaminated material from spill sites.

Dempster System Equipped Trucks



Quantity: 2 Total

Manufacturer: Volvo

Owner(s): 1 each, BP 1 each, CPAI

Specifications: Dempster hydraulic system

Function: Transport staging, related equipment and contaminated material to and from spill sites.

Auxiliary Equip: Dempster equipment system, dump box, connex flat

Skid Steer Loaders



Quantity: 11 Total

Manufacturer: Bobcat and Caterpillar

Owner(s): 7 each, ACS 2 each, CPAI
 1 each, ENI 1 each, Exxon

Specifications: 1 each, Model: 299 DXHP
 7 each, Model: MT-55
 1 each, Model: T320-G
 1 each, Model: T250-G
 1 each, Model: T200-G

Function: Performs various functions needed for spill response and field support.

Auxiliary Equip: Trencher, forks, bucket, auger, sweeper, trimmer, scratcher, jack hammer, snow blower and pintle hitch

Warehouse Fork Lifts



Quantity: 3 Total

Manufacturer: Caterpillar, Hyster and Clark

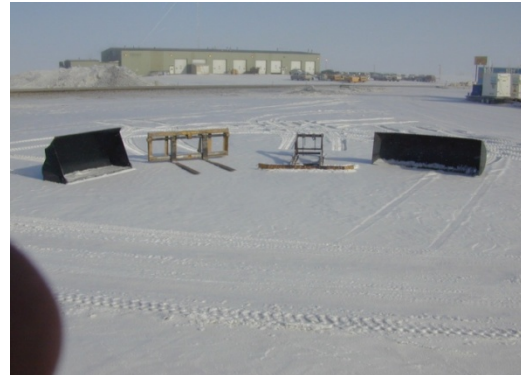
Owner(s): ACS

Specifications: Hyster: 1 each, 7,000 lbs. lifting capacity
 Caterpillar: 1 each, 6,000 lbs. lifting capacity
 Clark: 1 each, 9,000 lbs. lifting capacity

Function: Move and load equipment for day-to-day operations and response activities.

Auxiliary Equip: Pintle hitch attachment and man basket

Front End Loaders w/attachments



Quantity: 2 Total

Manufacturer: Volvo L90-E, and Volvo L110H

Owner(s): 2 each, ACS

Specifications: Volvo L90E – 22,280 lbs. lifting capacity

Volvo L110H – 22,280 lbs. lifting capacity

Function: Move and load equipment for day-to-day operations, response activities and snow removal.

Auxiliary Equip: Forks, bucket and pintle hitch attachment, snow plow, scratcher

Mobile Command Centers



ACS



EOA



Alyeska

Quantity: 3 Total

Manufacturer: Miscellaneous Builders

Owner(s): 1 each, ACS 1 each, Alyeska
 1 each, BP

Function: Provides a center of operations and communications at spill locations.

Auxiliary Equip: Diesel generator, tractor trailer or truck with dempster system

Staging Area Manager Offices



Quantity: 4 Total

Manufacturer: ATCO and Homemade

Owner(s): 2 each, BP 1 each, CPAI 1 each, Hilcorp

Specifications: 16' to 40'

Function: Staging Area Managers' offices.

Auxiliary Equip: Computer and generator

Winter Response Vans



Quantity: 2 Total

Manufacturer: Wells Cargo

Owner(s): BP

Specifications: 20' to 25'

Function: Designed to transport containment and recovery equipment for initial winter response operations.

Auxiliary Equip: Tow vehicle and generator

Tanker Rollover Van



Quantity: 1 Total

Manufacturer: Wells Cargo

Owner(s): BP

Specifications: 20'

Function: All in one rapid response trailer for source control and recovery of product in a rolled over tanker.

Auxiliary Equip: Tow vehicle

Steam Van



- Quantity:** 1 Total
- Manufacturer:** Spill Buster
- Owner(s):** CPAI
- Specifications:** 24'
- Function:** All in one response van that contains equipment to conduct high pressure hot water cleaning
- Auxiliary Equip:** Dempster system equipped truck

Warm Up/Break Shacks



Quantity: 6 Total

Manufacturer: Arctic Structures, ATCO and Homemade

Owner(s): 2 each, ACS 2 each, BP 1 each, CPAI
 1 each, Exxon

Specifications: 20' to 40'

Function: Provide area for responders to warm up and take breaks.

Auxiliary Equip: Generator

Portable Shelters



Quantity: 53 Total

Manufacturer: Hanson, Zumro, Air-Lite and Eureka

Owner(s): 24 each, ACS 14 each, BP 1 each, Savant
 1 each, Caelus 11 each, CPAI 1 each, ENI
 1 each, Exxon

Specifications: Sizes vary from 7' x 8', 12' x 10', 12' x 15', 13' x 16' and 12' x 20',
 26' x 64', 12' x 12', 13' x 21'

Function: Protection from environmental conditions for equipment and personnel.

Auxiliary Equip: Flooring and stoves are available for some styles, Zodi tent heater

Portable Shops



Quantity: 2 Total

Manufacturer: Homemade and Griffard Steel Inc.

Owner(s): ACS

Specifications: 10' w x 21' l x 11.5' h door 103" wide x 96" high 15,000 lbs.

14'W x 48.5'L 15.5'H Door 30,000 lbs.

Function: Protection from environmental conditions for equipment maintenance and repair.

Auxiliary Equip: Generator, heater

Portable Restroom Units



Quantity: 16 Total

Manufacturer: Arctic Structures, Britco, AMERI-CAN Engineering, Polyjohn, Sealand and Envirovac

Owner(s):	2 each, Envirovac , ACS	2 each, Envirovac, BP
	5 each, Portable toilets, CPAI	2 each, Portable toilets, BP
	4 each, Portable toilets, ACS	1 each, Envirovac, CPAI

Specifications: 24' to 33' long, male/female capable

Function: Provide on-site restroom facilities during response operations.

Auxiliary Equip: Generator

Indirect Fired Heaters



Quantity: 11 Total

Manufacturer: Tioga, Jetheat, Industrial Commercial, Equipment Source, Arcotherm, Zodi Outback Gear

Owner(s): 8 each, ACS 3 each, CPAI

Specifications: 2 each, 70,000 BTU 1 each, 380,000 BTU
 3 each, 420,000 BTU 1 each, 500,000 BTU
 1 each, 600,000 BTU 2 each 700,000 BTU
 1 each, 770,000 BTU

Function: Heating work areas and equipment.

Under Water Drop Lights



Quantity: 10 Total

Manufacturer: Deep Sea Power and ACS

Owner(s): 6 each, ACS 2 each, CPAI
 2 each, ENI

Specifications: Sealed drop light designed for use in water

Function: View oil pockets and movement under ice for winter recovery operations.

Auxiliary Equip: Generator

Light Plants and Stands



Quantity: 47 Total

Manufacturer: Hubbel-Cat, Allmand, Fostoria, Construction Electrical, Bemis, Allman Bros., and Pelican

Owner(s):	25 each, ACS	4 each, BP	7 each, CPAI
	4 each, ENI	2 each, Caelus	1 each, Savant
	2 each, Hilcorp	2 each, Exxon	

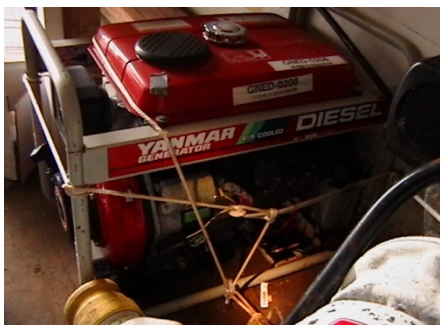
Specifications:

- 8 each, 2 light stands (2000 w)
- 5 each, 4 light stands (2000 w)
- 1 each, light plant (5,000 w)
- 18 each, single light stands (1,000 w)
- 6 each, double light stands (500 w)
- 3 each, 2 light (1000 w) with tripod
- 1 each, 3 light stand (1500 w)
- 2 each, 1 light stand (LED 16 w & 72 w)
- 2 each, 2 light stands (LED 70 w)
- 1 each, 4 light stand (LED 96 w)

Function: Illumination for night time response operations.

Auxiliary Equip: Generator, extension cord

Diesel Generators (various)



Quantity: 68 Total

Manufacturer: Diesel America West, KEM Equipment, Deutz, F. G. Wilson, Ingersoll Rand, Pacific Detroit Diesel, Kubota, AK Diesel West, ONAN, ESI, Winco, Cummins, and Magnum

Owner(s): 37 each, ACS 19 each, CPAI 2 each, Exxon
 4 each, BP 6 each, Hilcorp

Specifications: 11-2 kw, 6-3 kw, 14-4 kw, 5-5 kw, 12-6 kw, 6-10 kw, 2-12 kw, 1-13 kw, 2-15 kw, 3-17 kw, 1-25 kw, 2-40 kw, 3-45 kw, 1-60 kw

Function: Electrical power for various pieces of response equipment.

Auxiliary Equip: Power Splitter

Gas Generators (various)



Quantity: 48 Total

Manufacturer: Honda, Yamaha, and Powermate

Owner(s): 11 each, ACS 16 each, CPAI 4 each, Exxon
 13 each, BP 2 each, Caelus 2 each, ENI

Specifications: 2-1 kw, 21-2 kw, 7-3 kw, 11-4 kw, 2-5 kw, 3-7 kw

Function: Electrical power for various pieces of response equipment.

20' and 40' Connex



Quantity: 444 Total

Manufacturer: Various

Owner(s):	20' - 201 each, ACS	20' - 28 each, Hilcorp	20' - 71 each, CPAI
	20' - 12 each, ENI	20' - 8 each, Caelus	20' - 4 each, Savant
	20' - 53 each, BP	20' - 4 each, Exxon	
	40' - 5 each, ACS	40' - 3 each, BP	40' - 12 each, CPAI
	40' - 7 each, ENI	40' - 8 each, Hilcorp	

Specifications:	381 each, 20' connex	18 each, 6' connex
	35 each, 40' connex	10 each, 10' connex

Function: Material or boom storage.

Portable Fuel Tanks



Quantity: 16 Total

Manufacturer: Greer Tank and Western International

Owner(s): 9 each, ACS 2 each, Hilcorp
 1 each, Caelus 4 each, CPAI

Specifications: 1 each, 100 gallons
 1 each, 200 gallons
 1 each, 300 gallons
 1 each, 350 gallons
 12 each, 500 gallons

Function: Fueling support for either gasoline or diesel engines.



Communications

Portable Communications Towers



Quantity: 2 Total

Manufacturer: Aluma Tower Company

Owner(s): ACS

Specifications: 75' Tower

Function: Daily and oil spill response communications.

Portable Communications Shelters



Quantity: 2 Total

Manufacturer: Vertex Plastics

Owner(s): ACS

Function: Transportation of communications shelter to be used for expansion of oil spill radio channel coverage.

Auxiliary Equip: 4.0 kw diesel generator and 18' trailer

Handheld Radios



Quantity: 317 Total

Manufacturer: Motorola and ICOM

Owner(s): 270 each, ACS 2 each, Hilcorp
 1 each, Caelus 44 each, CPAI

Specifications: 24 each, UHF-ACS 24 each , UHF-CPAI
 13 each, Harmony-ACS
 229 each, VHF-ACS 20 each, VFH-CPAI
 4 each, VHF marine-ACS, 2 each VHF marine- Hilcorp
 1 each, VHF marine-Caelus

Function: Daily and oil spill response communications.

Auxiliary Equip: Charger, repeater, gap filler and translator

Iridium Phones



Quantity: 23 Total

Manufacturer: Motorola, Beam Communications, and Iridium

Owner(s): ACS

Specifications: 3 each, marine
20 each, handheld

Function: Satellite telephone communications/internet and e-mail capabilities.

Auxiliary Equip: Chargers, external antenna, SIMMS card

Mobile Radios



Quantity:	195 Total	
Manufacturer:	General Electric, Motorola, Horizon Titan, ICOM, Motorola, Regency and Standard	
Owner(s):	155 each, ACS	8 each, BP
	3 each, Caelus	13 each, CPAI
	10 each, Hilcorp	9 each, Exxon
Specifications	3 each, UHF-ACS	7 each, VHF-BP
	117 each, VHF-ACS	3 each, VHF-Exxon
	11 each, VHF-CPAI	4 each, VHF-Hilcorp
	2 each, VHF-Caelus	2 each, VHF marine-CPAI
	6 each, VHF marine-Hilcorp	33 each, VHF marine-ACS
	6 each, VHF marine-Exxon	1 each, VHF marine-Caelus
Function:	Marine, daily and oil spill response communications.	

GPS



Quantity: 167 Total

Manufacturer: Furuno, Echotec, Garmin, and Lowrance

Owner(s):	70 each, ACS	29 each, BP	25 each, CPAI
	6 each, Caelus	2 each, Savant	28 each, Hilcorp
	6 each, Exxon	1 each, ENI	

Specifications: Marine/handheld/plotter/GPS, radar

Handheld 95 Marine 71

Function: Navigation and delineation.

Auxiliary Equip: AA batteries, mag mount antenna

Gap Fillers



Gap Filler



Translator

- Quantity:** 6 Total
- Manufacturer:** Codan Radio Communications and Daniels
- Owner(s):** ACS
- Specifications:** 4 each, repeaters
2 each, translators
- Function:** Extend radio coverage.
- Auxiliary Equip:** 12 volt automotive battery

Radio Winter Drilling Kits



Quantity: 8 Total Kits

Manufacturer: ACS

Owner(s): ACS

Specifications: Per Kit: 3 each, VHF handhelds
 Per Kit: 1 each, VHF mobile
 Per Kit: 1 each, cellular bag phone

Function: Communications kit for remote drilling support.

Auxiliary Equip: Charger, mag mount antenna and spare batteries



Wildlife

Pinniped Enclosure



Quantity: 2 Total

Manufacturer: Alaska Sea Life Center

Owner(s): ACS

Specifications: 15' Diameter x 4' High

Function: Storage area for captured Pinniped.

Bear Cages



Quantity: 4 Total

Manufacturer: A&K Iron Works, BP Exploration and CPAI

Owner(s): 1 each, CPAI 2 each, BP
 1 each, US Fish and Wildlife

Specifications: 1 each, 3 piece unit
 2 each, trailer mounted unit
 1 each, single cage

Function: Storage area for captured bear.

Net Launchers



- Quantity:** 4 Total
- Manufacturer:** Coda Enterprises and Winchester
- Owner(s):** 1 each, ACS 1 each, BP 1 each, ENI 1 each, CPAI
- Specifications:** .308 Winchester shell/blank for launching net
- Function:** Capture wildlife.
- Auxiliary Equip:** .308 Blanks and net

Wildlife Kits (capture and hazing)



- Quantity:** 27 Total
- Manufacturer:** Alaska Clean Seas
- Owner(s):** 20 each, (hazing and capture) ACS
 1 each, (hazing) Hilcorp
 3 each, (hazing) CPAI
 1 each, (hazing) Caelus
 2 each, (hazing) BP
- Specifications:** 17 each, wildlife hazing kits
 10 each, capture kits
- Function:** Capture contaminated wildlife for rehabilitation and haze animals away from contaminated areas.

12 Gauge Shot Guns



Quantity: 21 Total

Manufacturer: New England Firearms and Remington

Owner(s): 11 each, ACS 7 each, CPAI 2 each, Caelus
 1 each, ENI

Specifications: 9 each, New England Firearms single shot
 12 each, Remington Model 870 pump

Function: Wildlife hazing.

Auxiliary Equip: Cracker shells, bangers and slugs

Bird Stabilization Center



Quantity: 1 Total

Manufacturer: Alaska Clean Seas

Owner(s): ACS

Specifications: 2 connecting units

Each section is portable and can be moved individually by truck or C-130

Function: Decontamination and rehabilitation of wildlife. The construction of the center enables it to be transported to any location on or off the North Slope.

Bird Scare Devices



Quantity: 71 Total

Manufacturer: Dazon BV Maastricht, Breco, Reed Joseph, Bird Gard, and Feather-Light Tech

Owner(s): 47 each, propane, ACS 3 each, propane, BP
 2 each, propane, ENI 7 each, propane, CP
 10 each, electronic, Hilcorp 1 each, electronic BP
 1 each, laser, BP

Specifications: 59 each, propane cannons 1 each, laser
 11 each, electronic

Function: Wildlife hazing.

Auxiliary Equip: Propane tank and receiver unit for electronic units. Battery for testing.



Misc.

Metocean Spill Tracking Systems



Tracking Buoy



Ice Beacon

Quantity: 34 Total

Manufacturer: Metocean

Owner(s): 24 each, Tracking Buoy, ACS

2 each, Tracking Buoy, ENI

8 each, Ice Beacons, Hilcorp

Specifications:

Function: Tracking oil spills in offshore currents and broken ice conditions.

Auxiliary Equip: Computer and software

Ground Penetrating Radar System



- Quantity:** 1 Total
- Manufacturer:** Sensors & Software Inc.
- Owner(s):** ACS
- Specifications:** Model Pulse EKKO Pro
- Function:** Ice profiling, determination of ice thickness and detection of spilled oil under ice
- Auxiliary Equip:** (2) Transmitter and receiving units

Hydraulic Power Units (various)



Quantity: 155 Total

Manufacturer: Various

Owner(s): 76 each, ACS	21 each, BP	30 each, CPAI
2 each, Caelus	6 each, ENI	6[each, Exxon
14 each, Hilcorp		

Specifications: Varies for purpose

Function: Power boom deployment and recovery systems.

Auxiliary Equip: Hydraulic hoses and possibly remote controller



CONTACT INFORMATION

24-HOUR Emergency Number
(907) 659-2405

www.alaskacleanseas.org

POSITION	EMPLOYEE	OFFICE	EMAIL
President & General Manager	Barkley Lloyd	(907) 659-3220 (Slope) (907) 644-2604 (Anchorage)	acsmpres@alaskacleanseas.org
Vice President & Business Manager	Lindy Theis	(907) 644-2603	finance@alaskacleanseas.org
Planning & Development Manager	Chris Hall Lee Majors	(907) 659-3207	planning@alaskacleanseas.org
Operations Manager	Fred McAdams Ken Linderman	(907) 659-3202	opmanager@alaskacleanseas.org
Eastern Operations Supervisor	Max McAdams Ron Kohler	(907) 659-3205	opsupeoa@alaskacleanseas.org
Western Operations Supervisor	Kent Ingalls John Parson	(907) 659-7919	N1227@conocophillips.com
Marine/Drilling Supervisor	Walter Henry Royce O'Brien	(909) 659-3245	Drilling-marine@alaskacleanseas.org
Accounting Supervisor	David Tiemessen	(907) 644-2602	accountingsup@alaskacleanseas.org

North Slope Office:

Alaska Clean Seas
PO Box 340022
Prudhoe Bay, AK 99743

Phone: (907) 659-2405
Fax: (907) 659-2616

Anchorage Office:

Alaska Clean Seas
4720 Business Park Blvd., Suite 642
Anchorage, AK 99503

Phone: (907) 743-8989
Fax: (907) 743-8988